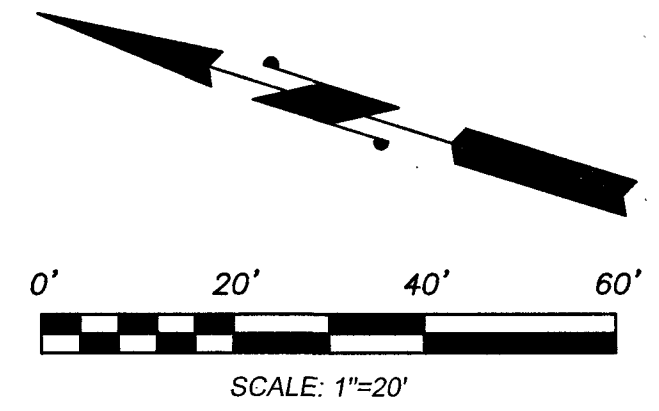


ABBREVIATIONS AND SYMBOLS

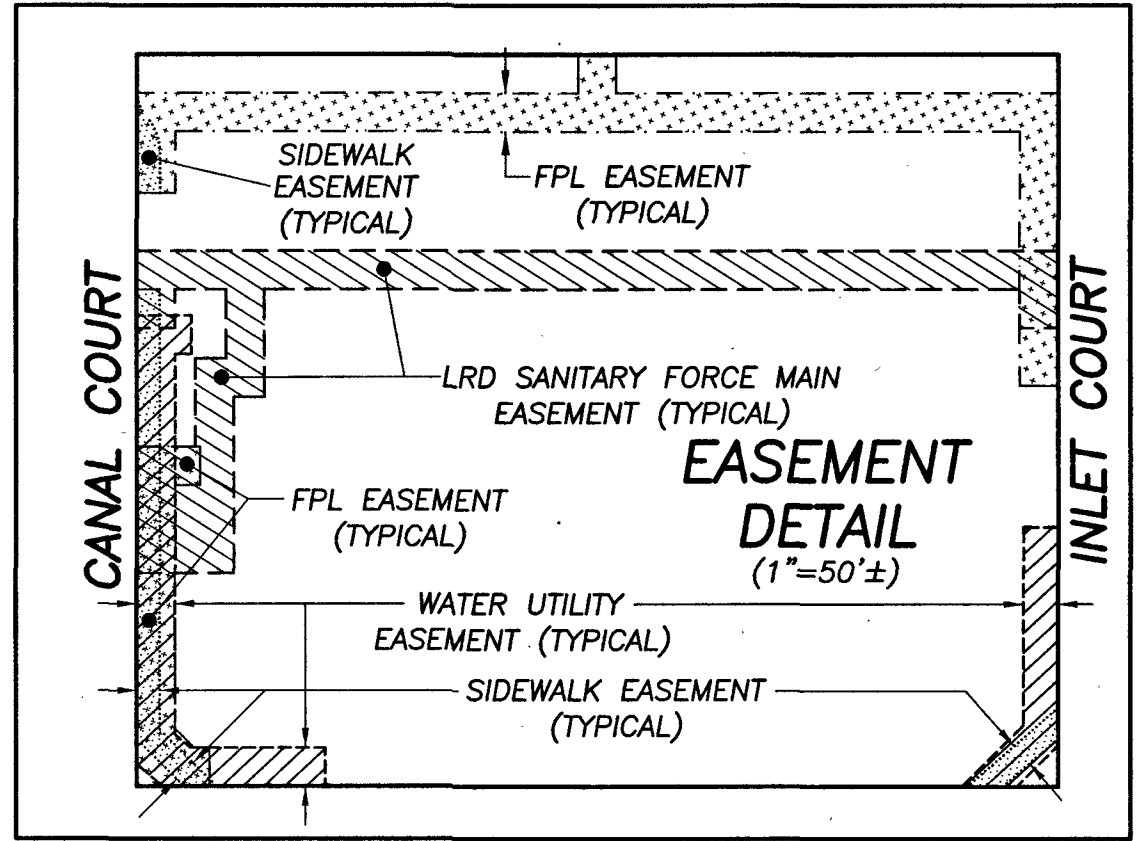
- A = ARC
- C = CENTERLINE
- FPL = FLORIDA POWER & LIGHT
- LRD = LOXAHATCHEE RIVER DISTRICT
- N.T.S. = NOT TO SCALE
- O/A = OVERALL
- O.R.B. = OFFICIAL RECORDS BOOK
- P.B. = PLAT BOOK
- PG. = PAGE
- P.O.B. = POINT OF BEGINNING
- P.R.M. = PERMANENT REFERENCE MONUMENT
- R = RADIUS
- R/W = RIGHT OF WAY
- S.F. = SQUARE FEET
- U.E. = UTILITY EASEMENT
- W.U.E. = WATER UTILITY EASEMENT
- Δ = DELTA (CENTRAL ANGLE)
- = SET 4"x4" CONCRETE MONUMENT & DISK STAMPED "P.R.M. LB 4569"
- = FOUND 4"x4" CONCRETE MONUMENT & DISK STAMPED "P.R.M. LB 7622"

MASTROIANNI FAMILY OFFICE REPLAT NO. 1

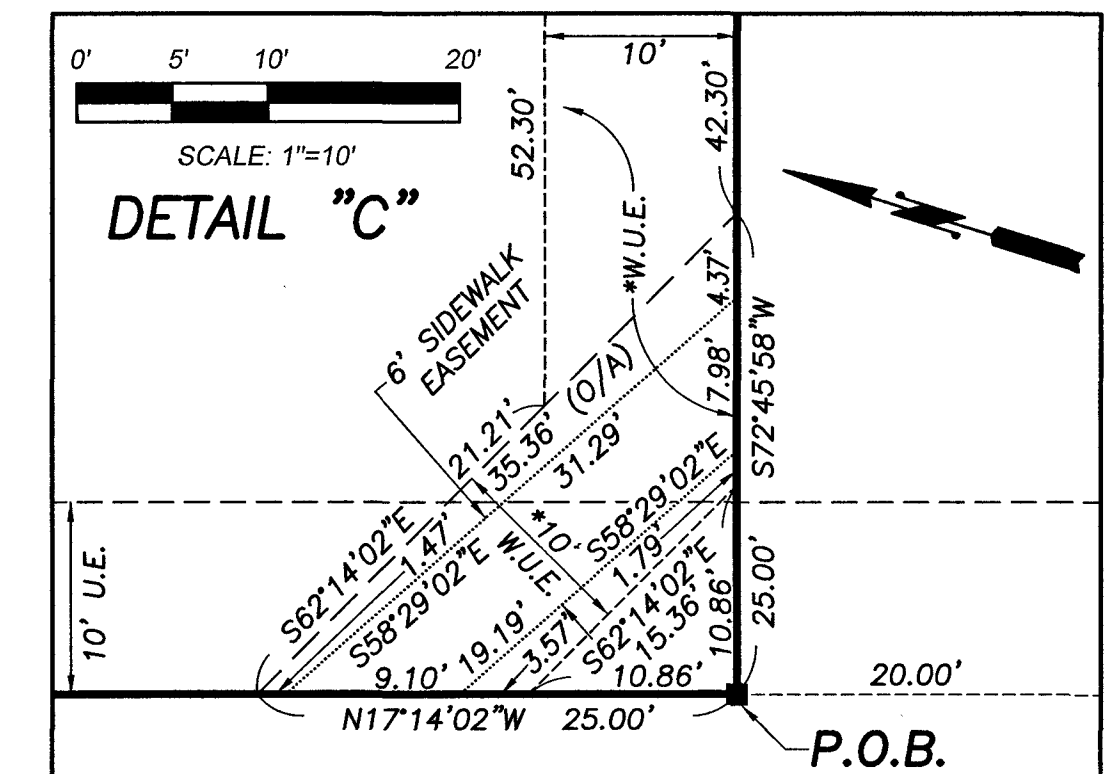
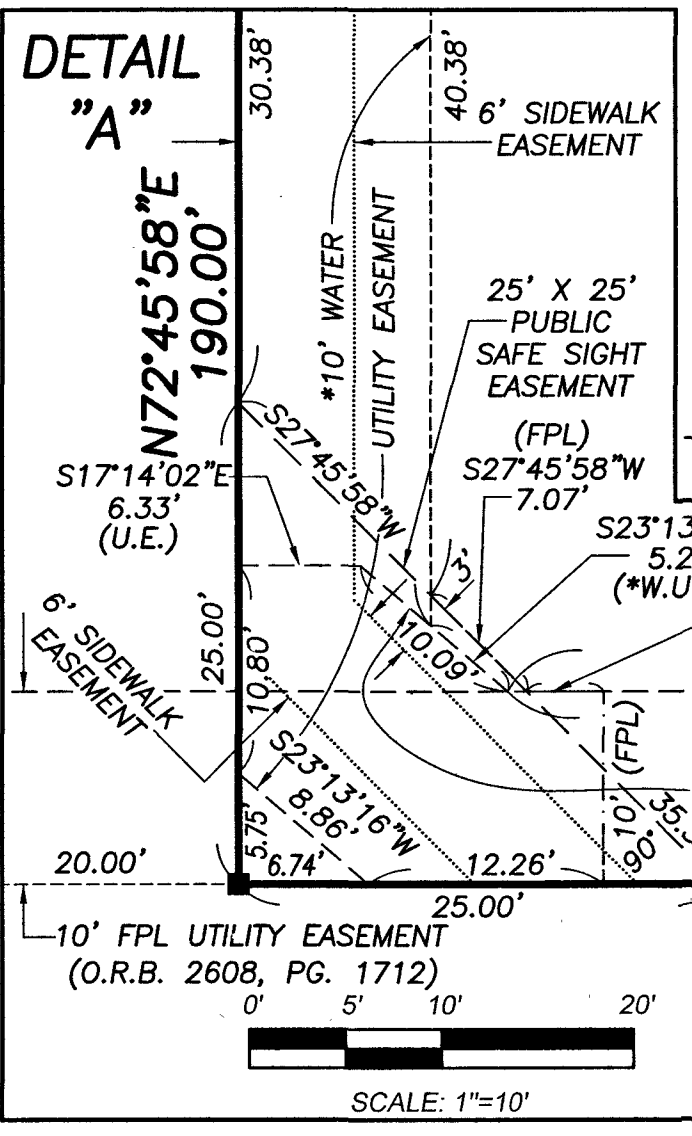
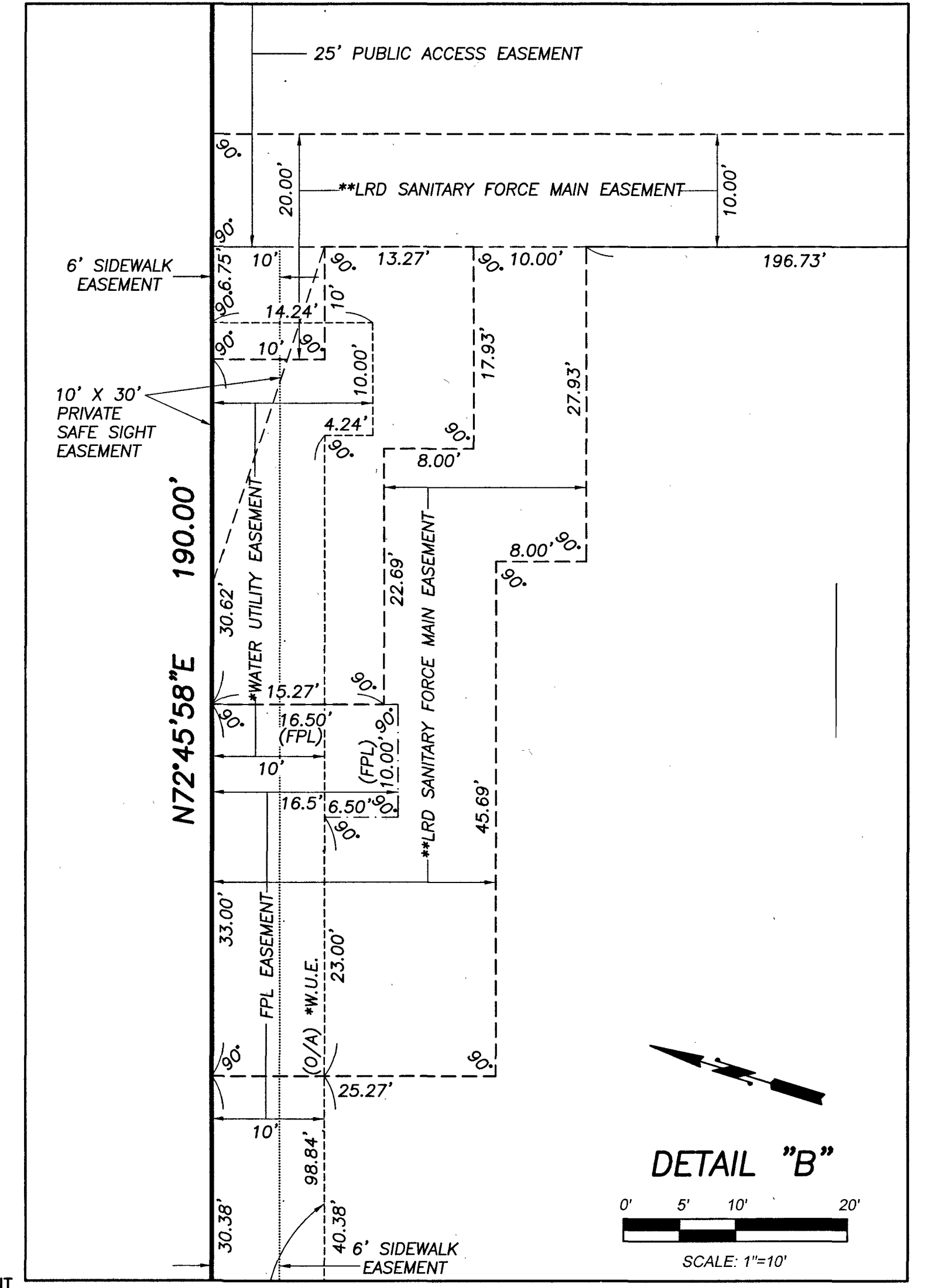
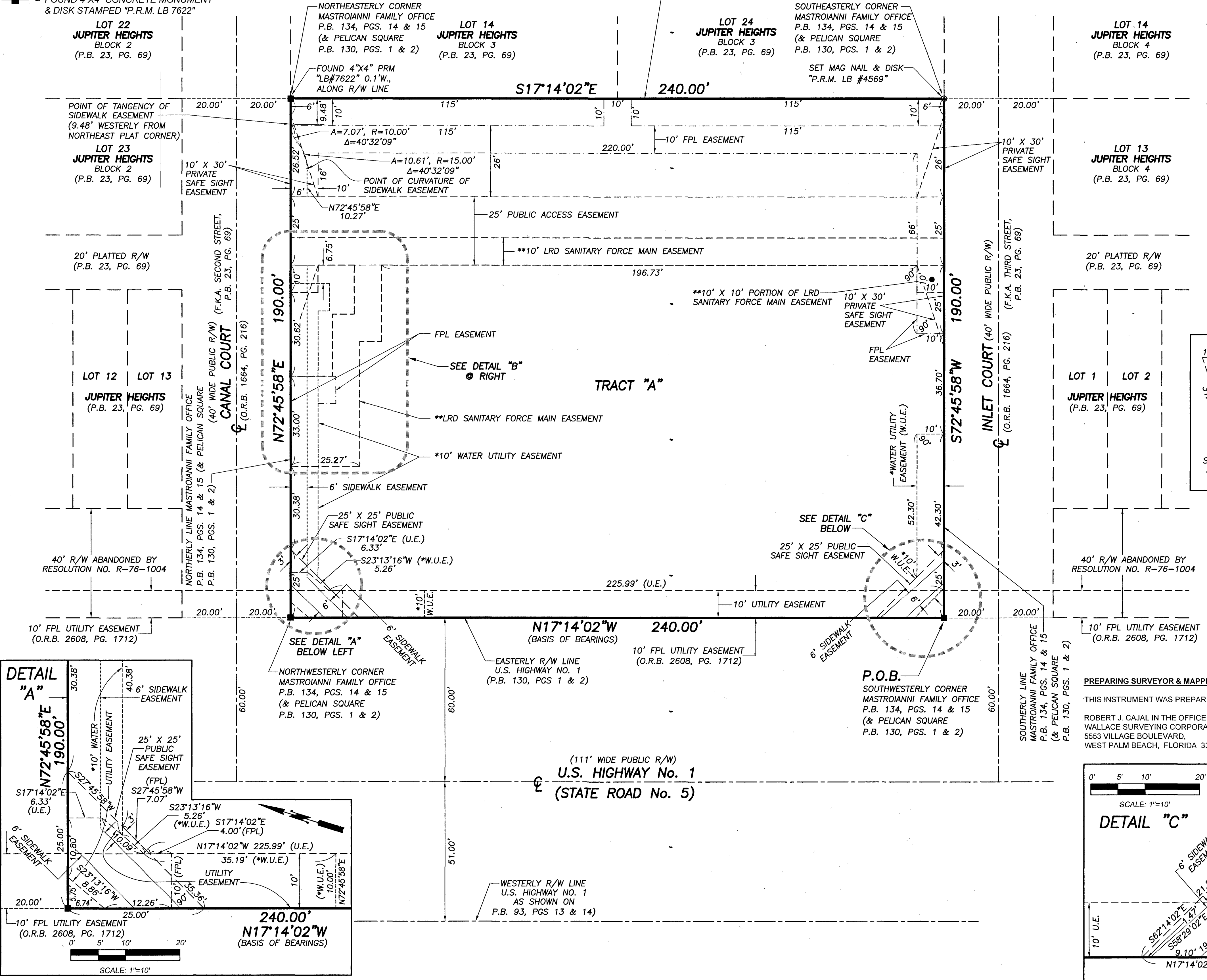
BEING A REPLAT OF TRACT "A", MASTROIANNI FAMILY OFFICE, ACCORDING TO THE PLAT THEREOF, AS RECORDED IN PLAT BOOK 134, PAGES 14 AND 15, PUBLIC RECORDS OF PALM BEACH COUNTY, FLORIDA, LYING IN SECTION 30, TOWNSHIP 40 SOUTH, RANGE 43 EAST, VILLAGE OF TEQUESTA, PALM BEACH COUNTY, FLORIDA.



NOTICE:
THIS PLAT, AS RECORDED IN ITS GRAPHIC FORM, IS THE OFFICIAL DEPICTION OF THE SUBDIVIDED LANDS DESCRIBED HEREIN AND WILL IN NO CIRCUMSTANCES BE SUPPLANTED IN AUTHORITY BY ANY OTHER GRAPHIC OR DIGITAL FORM OF THE PLAT. THERE MAY BE ADDITIONAL RESTRICTIONS THAT ARE NOT RECORDED ON THIS PLAT THAT MAY BE FOUND IN THE PUBLIC RECORDS OF THIS COUNTY.



SHEET 2 OF 2



PREPARING SURVEYOR & MAPPER'S STATEMENT
THIS INSTRUMENT WAS PREPARED BY:
ROBERT J. CAJAL IN THE OFFICE OF
WALLACE SURVEYING CORPORATION
5553 VILLAGE BOULEVARD
WEST PALM BEACH, FLORIDA 33407

NOTE #1
IN THE EVENT OF CONSTRUCTION, MAINTENANCE OR OPERATION ACTIVITIES PERFORMED BY THE VILLAGE OF TEQUESTA IN THE WATER UTILITY EASEMENT, ANY AND ALL COSTS FOR REPAIR AND/OR REPLACEMENT OF SURFACE COVERING (PAVEMENT, PAVER, ETC.) SHALL BE THE SOLE FINANCIAL RESPONSIBILITY OF THE MASTROIANNI FAMILY OFFICE OWNERS WITH MASTROIANNI FAMILY HEADQUARTERS, LLC, A DELAWARE LIMITED LIABILITY COMPANY, ITS SUCCESSORS AND ASSIGNS.

NOTE #2
IN THE EVENT OF CONSTRUCTION, MAINTENANCE OR OPERATION ACTIVITIES PERFORMED BY THE LOXAHATCHEE RIVER ENVIRONMENTAL CONTROL DISTRICT AND/OR THE VILLAGE OF TEQUESTA IN THE LRD SANITARY FORCE MAIN EASEMENT, ANY AND ALL COSTS FOR REPAIR AND/OR REPLACEMENT OF SURFACE COVERING (PAVEMENT, PAVER, ETC.) SHALL BE THE SOLE FINANCIAL RESPONSIBILITY OF THE MASTROIANNI FAMILY OFFICE OWNERS WITH MASTROIANNI FAMILY HEADQUARTERS, LLC, A DELAWARE LIMITED LIABILITY COMPANY, ITS SUCCESSORS AND ASSIGNS.

WALLACE SURVEYING CORP. LICENSED BUSINESS # 4569 5553 VILLAGE BOULEVARD, WEST PALM BEACH, FLORIDA 33407 (561) 643-4551		
FIELD:	JOB No.: 22-1057.7	F.B. PG.
OFFICE: R.C.	DATE: MARCH 2023	DWG. No.: 22-1057-2
CK'D:	REF.: 22-1057-1.DWG	SHEET 2 OF 2